



## OVERVIEW

**Drain reconstruction, concrete repair reinforced with Orlitech mesh 3mm x100x100 – California USA**

### Issue:

Restricted access and working environment.

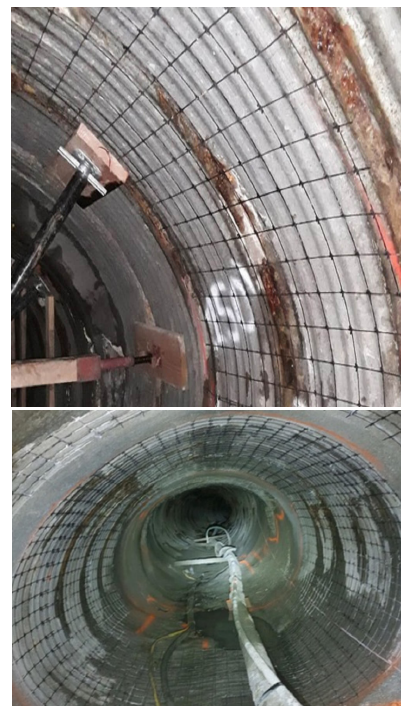
Concrete repair of a drainage tunnel lining was a difficult project made a little easier by using Orlitech mesh 3mm 100x100 which is supplied on a roll and weighs only 360g/m<sup>2</sup>

Approx. 1000 m<sup>2</sup> of Orlitech composite mesh 3 100x100

Advantages of composite

- No Corrosion
- Ease of handling on site – 6 x lighter than steel
- less cover of sprayed concrete
- time savings

- overall cost savings



ORLITECH COMPOSITES – LIGHTER – FASTER – STRONGER – LOWER EMBODIED CARBON